



# CHESAPEAKE BAY SEPTIC TANK, LLC

**Septic Installers' Local Distributor for Monarch Products Co. Inc.  
Precast Concrete Products**

PUMPS AND TANKS ARE  
AVAILABLE TO CONFORM TO  
VARIOUS REQUIREMENTS

FINISHED GRADE

MOISTURE RESISTANT  
CONNECTORS

14-2 UF CABLES

TO ALARM

UNION

2'-0"  
VARIABLE

INLET

ALARM  
SWITCH

ON

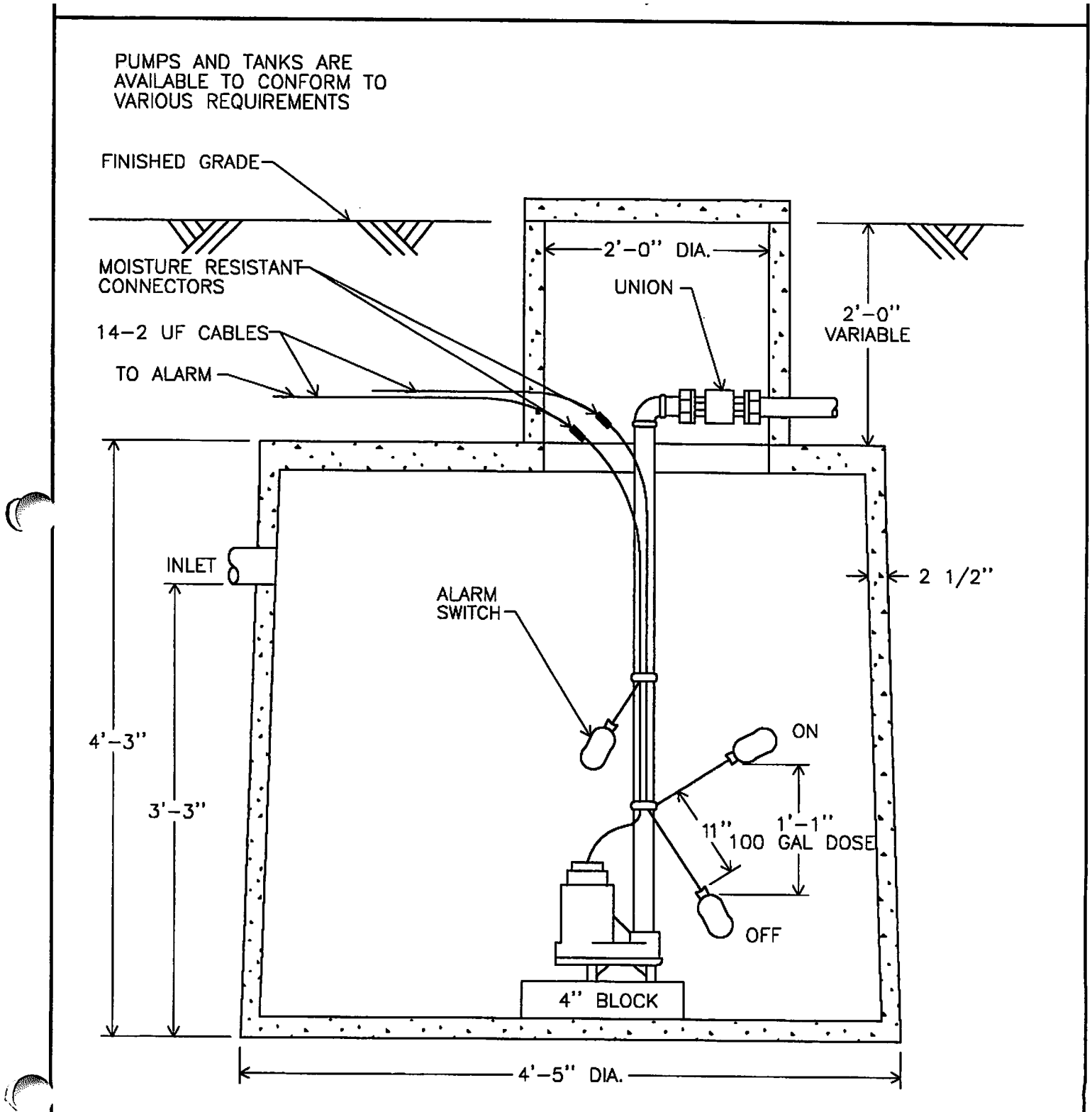
OFF

1'-1"  
100 GAL DOSE

4" BLOCK

300 GALLON PUMP TANK & PUMP  
FOR PRESSURE DOSING

DWG. P-1





# CHESAPEAKE BAY SEPTIC TANK, LLC

**Septic Installers' Local Distributor for Monarch Products Co. Inc.  
Precast Concrete Products**

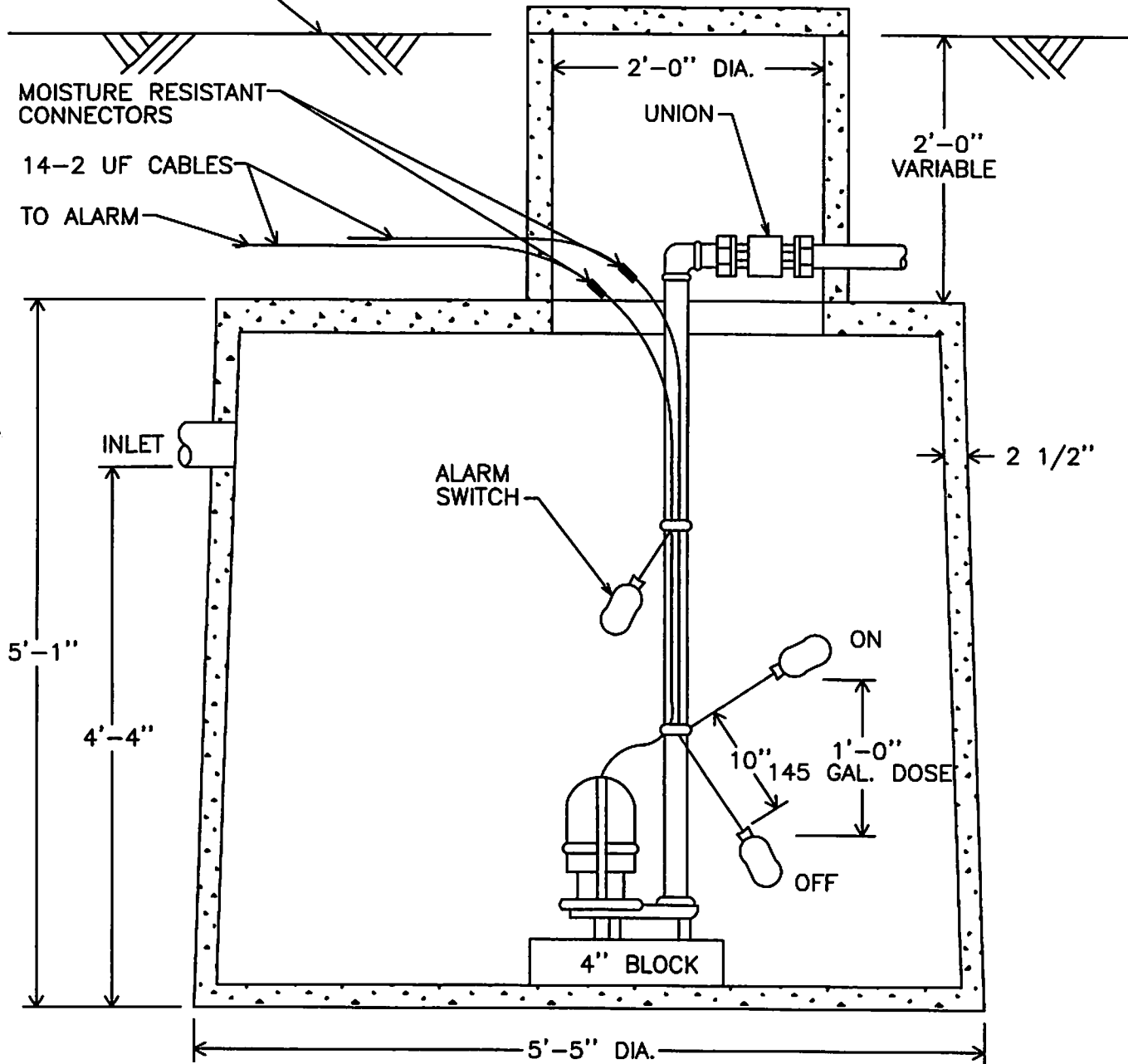
PUMPS AND TANKS ARE  
AVAILABLE TO CONFORM TO  
VARIOUS REQUIREMENTS

FINISHED GRADE

MOISTURE RESISTANT  
CONNECTORS

14-2 UF CABLES

TO ALARM



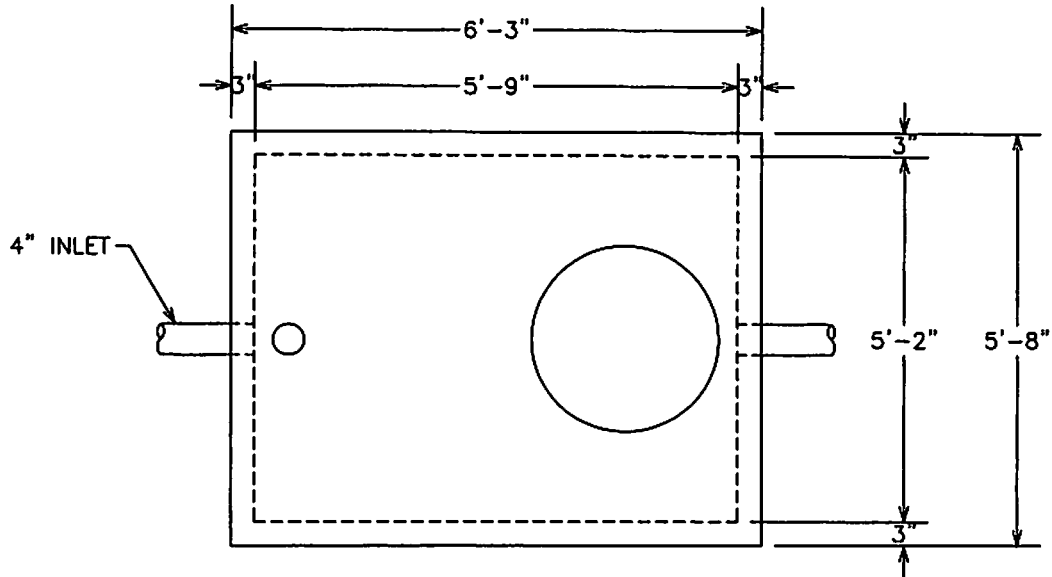
**500 GALLON PUMP TANK & PUMP  
FOR PRESSURE DOSING**

DWG. P-2

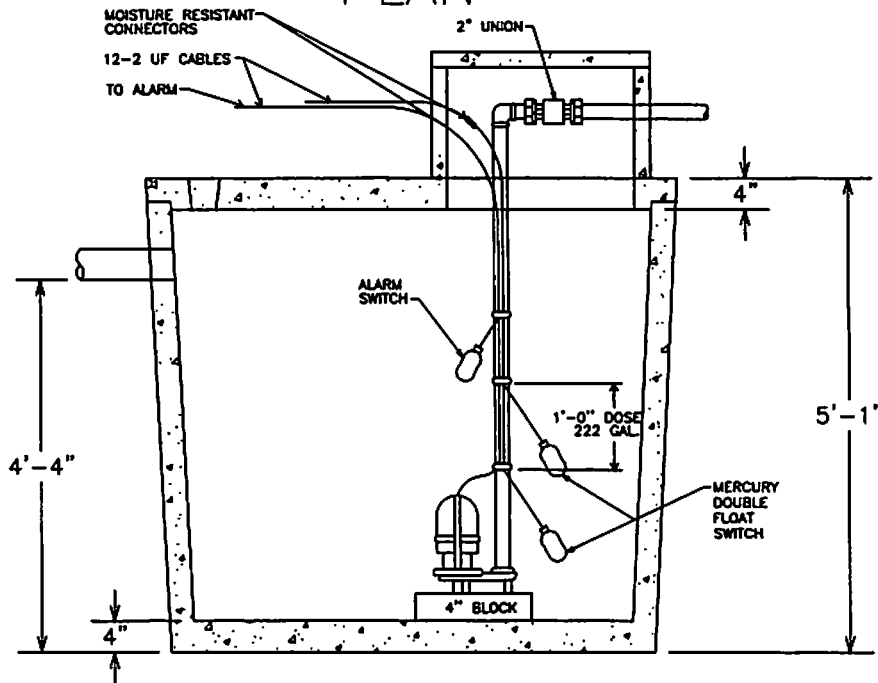


# CHESAPEAKE BAY SEPTIC TANK, LLC

Septic Installers' Local Distributor for Monarch Products Co. Inc.  
Precast Concrete Products



—PLAN—



—SECTION—

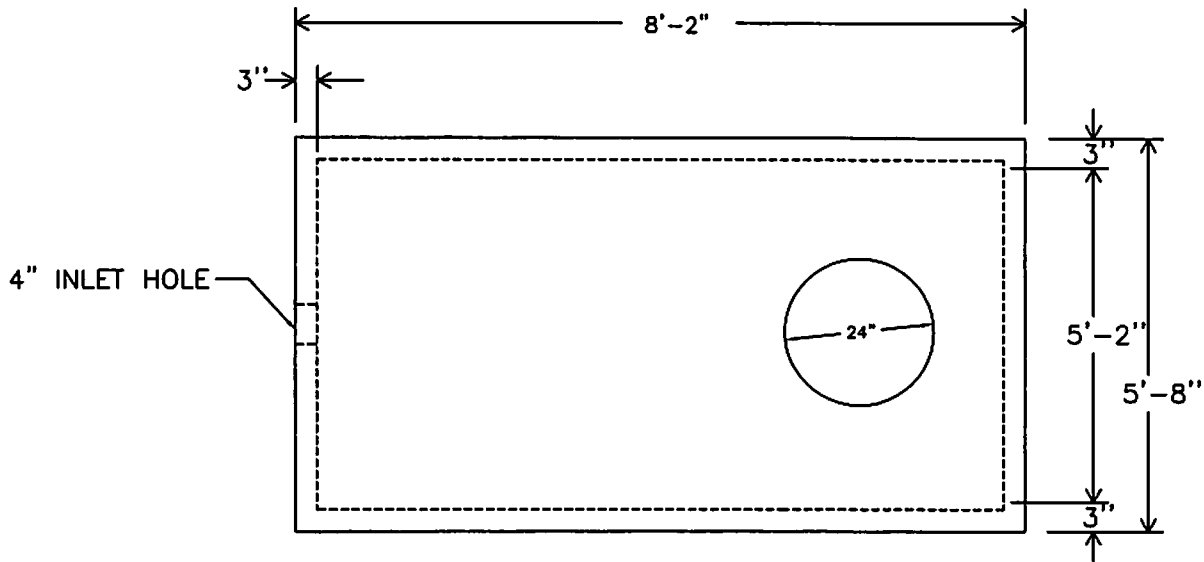
750 GALLON PUMP TANK  
WITH PUMP

PT-750R

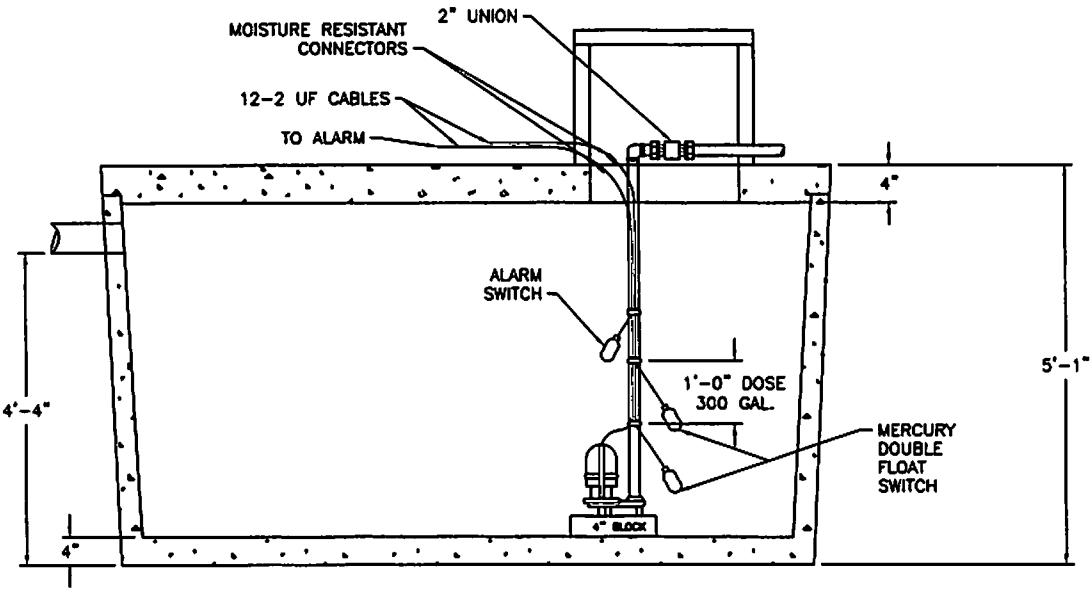


# CHESAPEAKE BAY SEPTIC TANK, LLC

Septic Installers' Local Distributor for Monarch Products Co. Inc.  
Precast Concrete Products



—PLAN—



1000 GALLON  
RECTANGULAR PUMP TANK

DWG. ST10-2PTHA



# CHESAPEAKE BAY SEPTIC TANK, LLC

**Septic Installers' Local Distributor for Monarch Products Co. Inc.  
Precast Concrete Products**

VARIOUS TANK AND  
PUMP SIZES AVAILABLE  
TO MEET SPECIFIC  
DESIGN REQUIREMENTS

GALVANIZED STEEL  
SUPPORT

DUPLEX CONTROL PANEL  
WITH HIGH WATER ALARM  
(MAY BE MOUNTED REMOTE)

PVC CONDUIT

30" X 30" ALUMINUM HATCH

VARIABLE

PVC UNIONS, CHECK  
VALVES AND BALL  
VALVES (OPTIONAL)

PVC SCHEDULE  
40 DISCHARGE

SWITCH MOUNTING  
BRACKET WITH CORD  
CONNECTORS FOR  
ADJUSTMENT OR  
REPLACEMENT  
FROM UPPER CHAMBER

-BOTH  
PUMPS ON  
& ALARM

-PUMP  
ON

-PUMP  
OFF

SUBMERSIBLE  
PUMPS

3"

5'-8" X 8'-2" RECT  
DIMENSIONS SHOWN ARE FOR 1000 GALLON PUMP TANK

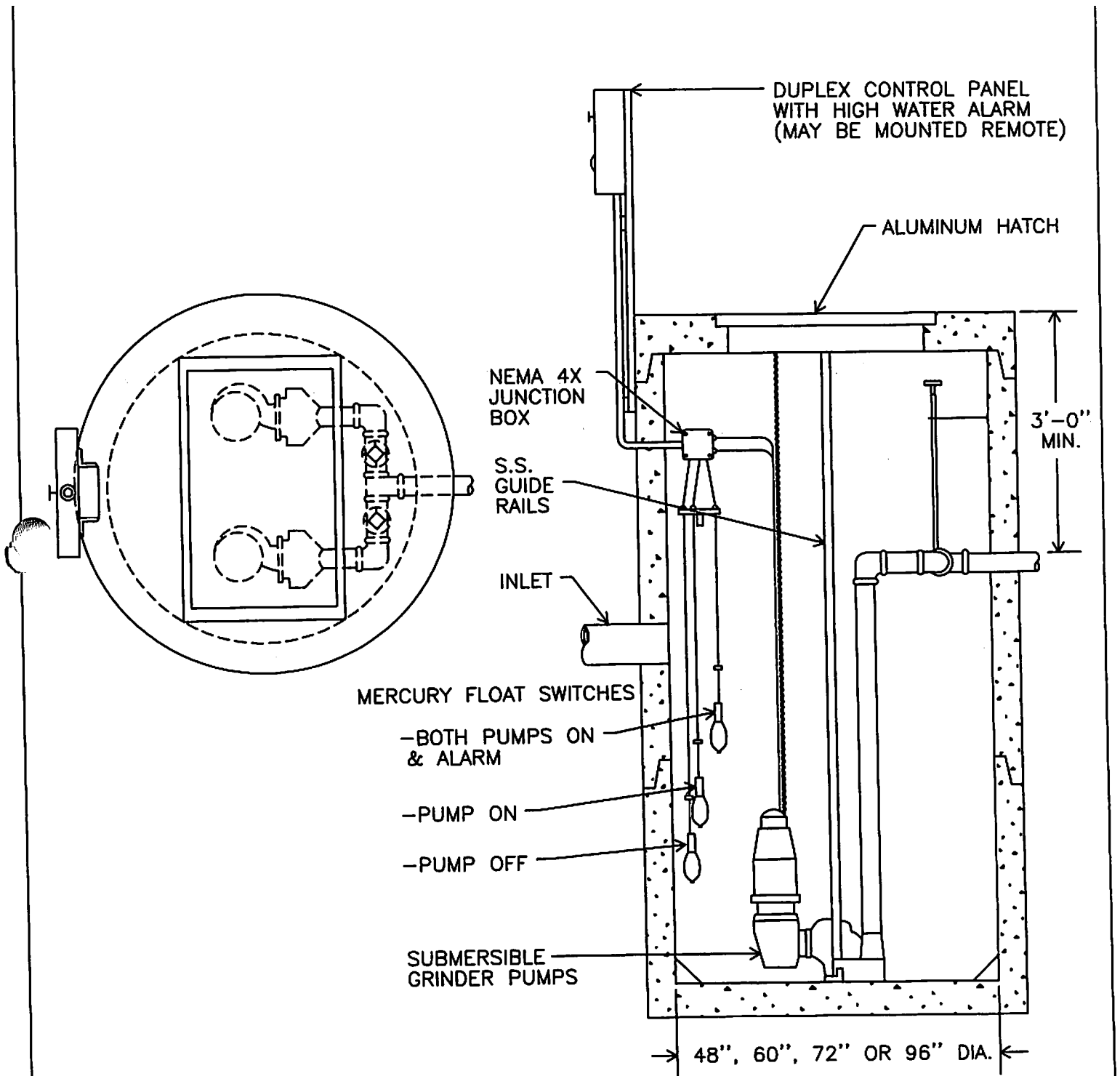
**DUPLEX PUMP STATION  
WITH PUMPS FREE STANDING**

DWG. P-10



# CHESAPEAKE BAY SEPTIC TANK, LLC

Septic Installers' Local Distributor for Monarch Products Co. Inc.  
Precast Concrete Products



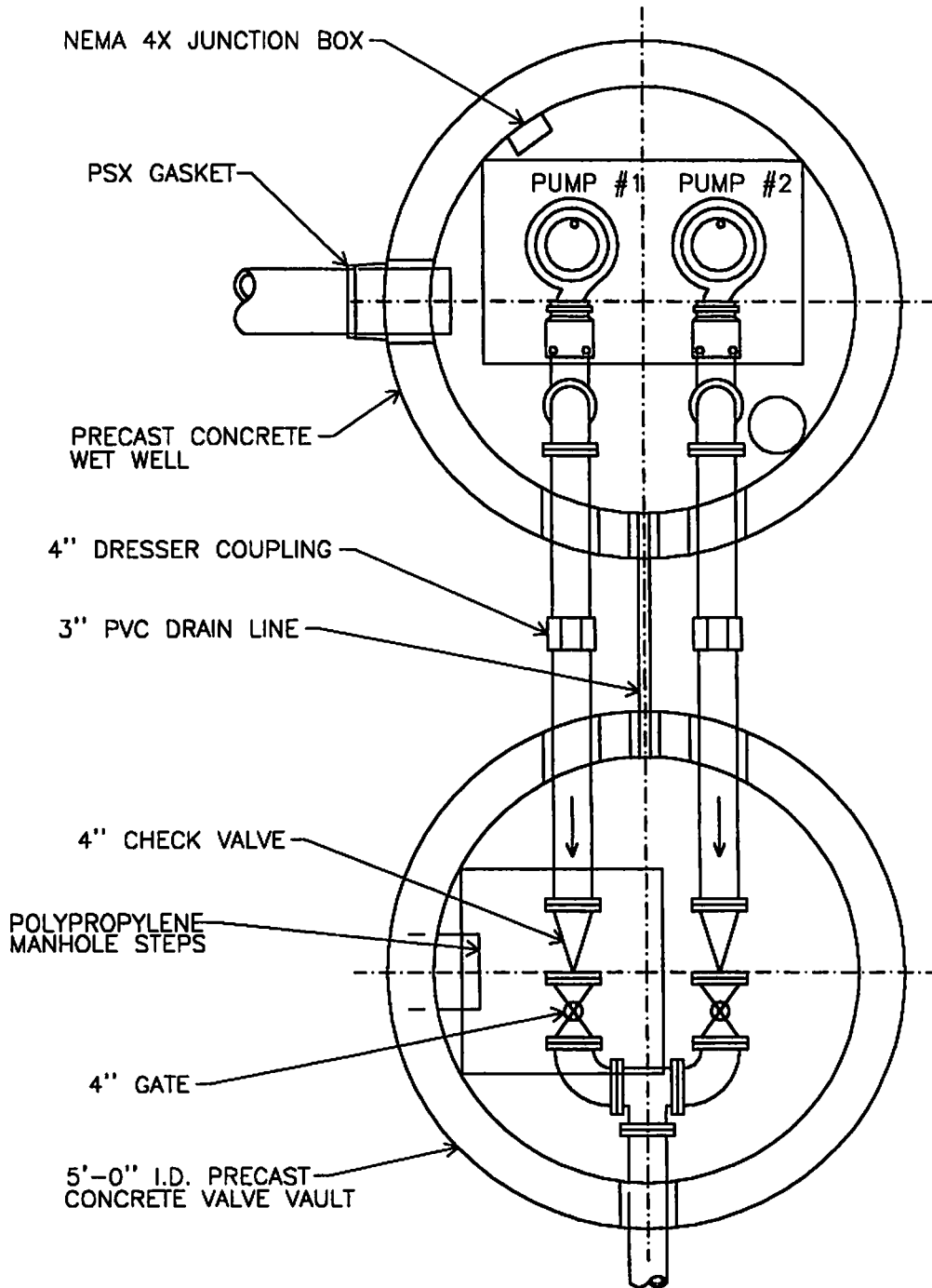
DUPLEX GRINDER PUMP STATION  
WITH PUMPS ON RAIL SYSTEM

DWG. P-11



# CHESAPEAKE BAY SEPTIC TANK, LLC

**Septic Installers' Local Distributor for Monarch Products Co. Inc.  
Precast Concrete Products**



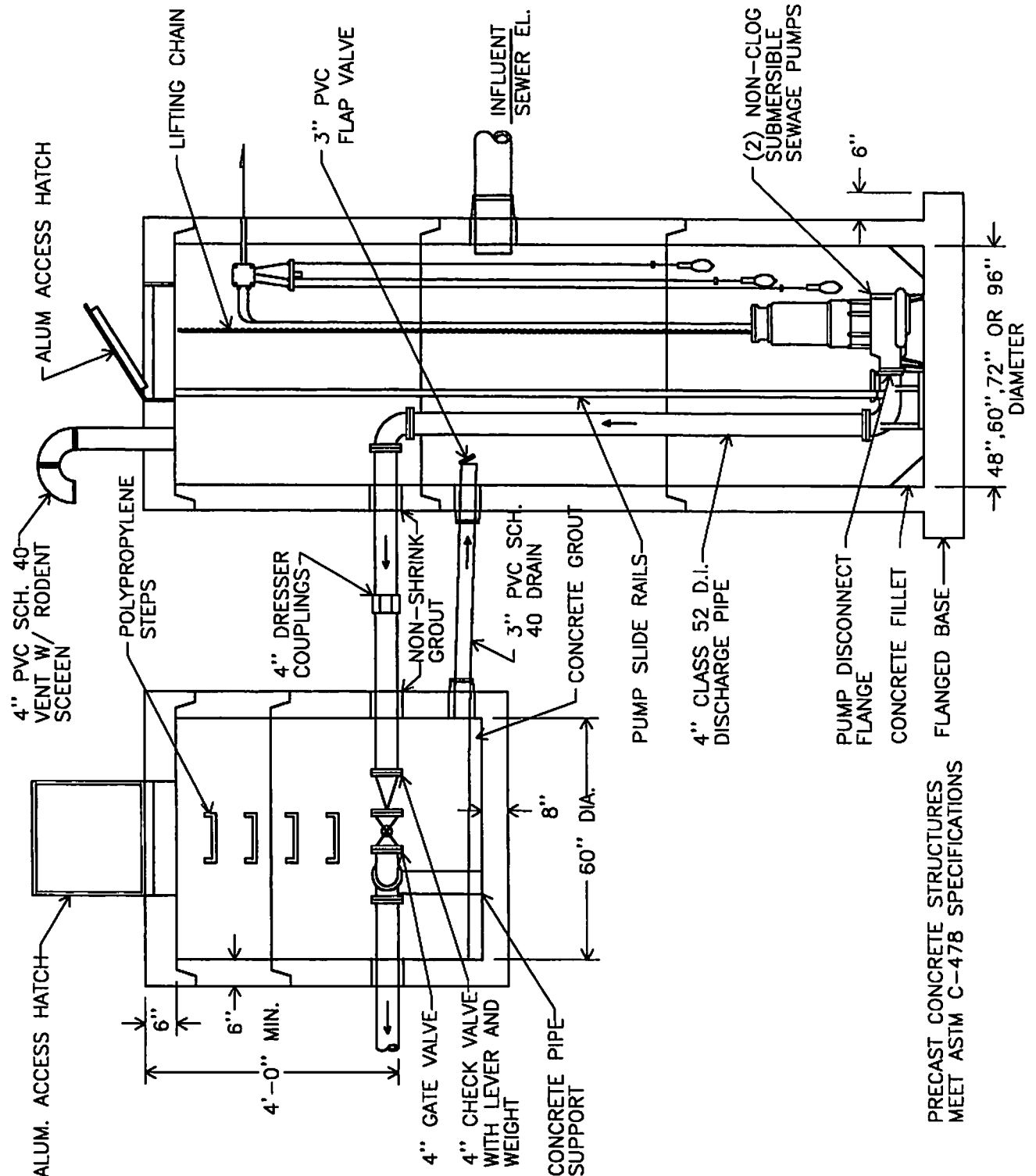
**WET WELL AND VALVE VAULT**

DWG. P-12  
( 1 OF 2 )



# CHESAPEAKE BAY SEPTIC TANK, LLC

Septic Installers' Local Distributor for Monarch Products Co. Inc.  
Precast Concrete Products



WET WELL AND VALVE VAULT

DWG. P-12  
(2 OF 2)



Septic Installers' Local Distributor for Monarch Products Co. Inc.  
Precast Concrete Products

# Goulds Pumps

## RGS2012 Submersible Grinder Pump



Goulds Pumps is a brand of ITT Corporation.

[www.goulds.com](http://www.goulds.com)

*Engineered for life*

### FEATURES

- **Design:** Capable of grinding domestic sewage in individual residential applications.
- **Cutter System:** Anti-roping design. Two blade rotary cutter is threaded to shaft. Stationary cutter ring is reversible for extended service.
- **Impeller:** Silicon bronze, semi-open, non-overloading two-vane design with pump-out vanes for mechanical seal protection. Balanced for smooth operation.
- **Casing:** Cast iron, volute type for high efficiency. Adaptable for guide rail system.
- **Motor:** Fully submerged in oil-filled chamber. High grade turbine oil surrounds motor for more efficient heat dissipation, permanent lubrication of bearings and mechanical seal, and protection against outside environment.
- **Motor Shaft:** 300 series stainless steel, short overhang for minimum shaft deflection.
- **Designed for Continuous Operation:** Pump ratings are within the motor manufacturer's recommended working limits, can be operated continuously without damage when fully submerged.
- **Bearings:** Upper and lower ball bearings for precision positioning of parts and to carry all radial and thrust loads.
- **Mechanical Seal:** Hardfaced Silicon carbide for longer life, stainless steel metal parts, BUNA-N elastomers.
- **Power Cable:** Severe duty rated, oil and water resistant. Epoxy seal on motor end provides secondary moisture barrier in case of outer jacket damage and to prevent oil wicking.
- **O-Ring:** Assures positive sealing against contaminants and oil leakage.
- **Paint:** Electro-coat paint process protects all casting surfaces.
- May be used with optional guide rail. See Fittings or Pump Removal Systems.

## Septic Installers' Local Distributor for Monarch Products Co. Inc. Precast Concrete Products

### APPLICATIONS

Designed for high head residential sewage applications where a gravity system is not practical. Ideal for pressure sewage systems.

### SPECIFICATIONS

#### Pump:

- Capacities: to 41 GPM.
- Total heads: to 95' TDH.
- Discharge: 1 1/4" NPT.
- Temperature: 104°F (40°C) maximum continuous, 140°F (60°C) maximum intermittent.
- Single mechanical seal: silicon carbide rotary/silicon carbide stationary, 300 series stainless steel metal parts, BUNA-N elastomers.
- Fasteners: 300 series stainless steel.
- Rotating cutter and cutter ring: 440 C hardened stainless steel.

#### Motor:

- Single phase: 2 HP, 60 Hz, 3450 RPM, 208/230 V, capacitor start with on winding thermal protector.  
**No external capacitor kits required.**
- Class F insulation.
- Shaft: 300 series stainless steel threaded design.
- Bearings: ball bearings upper and lower.

#### Power Cord with bare lead ends:

- Use for connections in a control panel or junction box.
- Standard length 20', 14/3 STOW.
- Optional lengths of 30', 50' and 100'.

#### Power Cord with 230 V NEMA three prong grounding plug:

- P suffix equals a 20' long cord with plug.
- PS suffix equals a 30' long cord with plug.
- Allows direct connection to piggyback type float switch.

### AGENCY LISTINGS

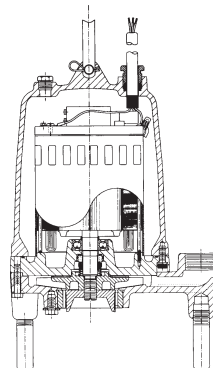


Tested to UL 778  
and CSA 22.2 108  
Standards By  
Canadian Standards  
Association  
File #LR38549



Underwriters  
Laboratories

Goulds Pumps is ISO 9001 Registered.



### MODEL INFORMATION

Order Number	HP	Volts	Phase	RPM	Operation	Discharge Size	Impeller Diameter (inches)	Maximum Amps	LRA	Power Cord	Weight (lbs.)
RGS2012	2	208/230	1	3450	Manual	1 1/4"	5.69"	15	59	20' with Bare Leads	75
RGS2012P					Automatic					20' with 230 V Plug	
RGS2012PA					Manual					20' with 230 V Plug and Float	76
RGS2012PS					Manual					30' with 230 V Plug	

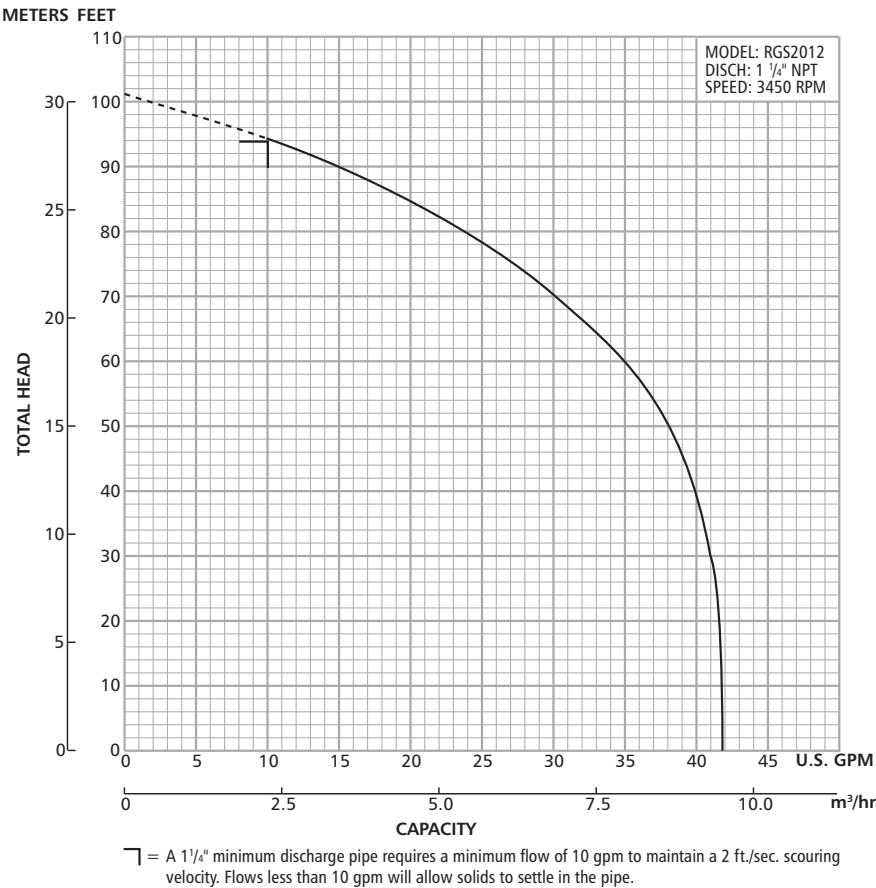
A non-stock pump may be special ordered with optional legs by adding an "L" suffix to the Order Number. Example: RGS2012L, RGS2012SL, RGS2012PSL, etc. See "L" List Adder in price book.

### MOTOR DATA

HP	Volts	Phase	RPM	Maximum Amps	LRA	Full Load Motor Efficiency	Resistance		Power Cable	Fuse/Circuit Breaker
							Start	Line-Line		
2	208/230	1	3450	15	59	70	2.47	0.6	14/3	30

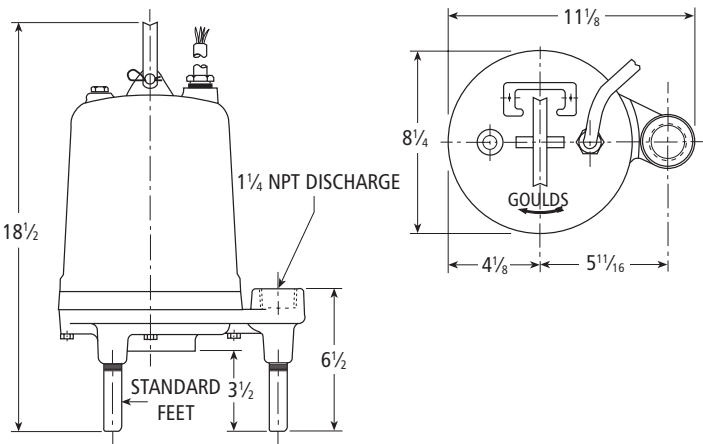
Septic Installers' Local Distributor for Monarch Products Co. Inc.

Precast Concrete Products



### DIMENSIONS

(All dimensions are in inches. Do not use for construction purposes.)



\* Optional pump legs are recommended for poly or fiberglass basin installations where the pumps contact the basin floor.  
The order number for a package of (3) three optional pump legs is 4K639.

## Septic Installers' Local Distributor for Monarch Products Co. Inc. Precast Concrete Products

### APPLICATION DATA

Minimum Casing Thickness	5/16"
Casing Corrosion Allowance	1/8"
Maximum Working Pressure	50 PSI
Maximum Submergence	50 feet
Minimum Submergence	Fully submerged for continuous operation 6" below top of motor for intermittent operation
Maximum Environmental Temperature	40°C (104°F) continuous operation 60°C (140°F) intermittent operation
Maximum Number of Evenly Distributed Starts per hour	10
Bearings	B-10 life of 30,000 hours min.
Minimum Basin Size	Simplex – 24" x 36" Fiberglass Duplex – 36" x 36" Fiberglass
1 1/4" Minimum Discharge Pipe Diameter	Requires a minimum flow of 10 gpm to maintain a 2 ft./sec. scouring velocity
2" Maximum Discharge Pipe Diameter	Requires a minimum flow of 21 gpm to maintain a 2 ft./sec. scouring velocity

### STANDARD PARTS

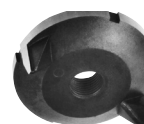
Ball Bearing – upper	Single row ball – SKF 6203-2Z
Ball Bearing – lower	Single row ball – SKF 6204-2Z
Mechanical Seal	Silicon carbide/silicon carbide; Type 16
O-Ring – motor cover	BUNA-N, AS 568A-166

### CONSTRUCTION DETAILS

Power Cable – type	14/3 STOW, single phase with bare leads 14/3 STOW, with 230 V NEMA three prong grounding plug
Motor Cover	Gray cast iron - ASTM A48, Class 30
Bearing Housing	Gray cast iron - ASTM A48, Class 30
Seal Housing	Gray cast iron - ASTM A48, Class 30
Casing	Gray cast iron - ASTM A48, Class 30
Impeller	Cast silicon bronze - ASTM B584 C87600
Motor Shaft	AISI 300 series stainless steel
Motor Design	NEMA 48 frame, oil filled with class F insulation
Motor Overload Protection	On winding thermal protector - auto reset
External Hardware	300 series stainless steel
Impeller Type	Semi-opened with pump out vanes on back shroud
Cutter	Two blades; type 440C hardened stainless steel
Oil Capacity – motor chamber	.88 gallons

### CUTTER ASSEMBLY

2-Blade Rotating Cutter



Reversible Cutter Ring



Goulds Pumps and the ITT Engineered Blocks Symbol are registered trademarks and tradenames of ITT Corporation.

SPECIFICATIONS ARE SUBJECT TO CHANGE WITHOUT NOTICE.

BRGS2012 March, 2008

© 2008 ITT Corporation

*Engineered for life*

Septic Installers' Local Distributor for Monarch Products Co. Inc.  
Precast Concrete Products

## Goulds Pumps

WS\_BHF Series Model 3887BHF

Submersible Sewage Pump

Prosurance available for residential applications.



Goulds Pumps is a brand of ITT  
Residential and Commercial Water.

[www.goulds.com](http://www.goulds.com)

*Engineered for life*

### FEATURES

- **Impeller:** Cast iron, enclosed, non-clog, dynamically balanced with pump out vanes for mechanical seal protection.
- **Casing:** Cast iron flanged volute type for maximum efficiency. Designed for easy installation on A10-20 slide rail or base elbow rail systems.
- **Mechanical Seal:** Silicon Carbide vs. Silicon Carbide sealing faces for superior abrasive resistance, stainless steel metal parts, BUNA-N elastomers.
- **Shaft:** Corrosion resistant, 300 series stainless steel. Threaded design. Locknut on all models to guard against component damage on accidental reverse rotation.
- **Fasteners:** 300 series stainless steel.
- Capable of running dry without damage to components.
- Designed for continuous operation, when fully submerged.

### AGENCY LISTINGS



Tested to UL 778 and CSA 22.2 108 Standards  
By Canadian Standards Association — File #LR38549  
Goulds Pumps is ISO 9001 Registered.

## Septic Installers' Local Distributor for Monarch Products Co. Inc. Precast Concrete Products

### APPLICATIONS

Specifically designed for the following uses:

- Homes
- Water transfer
- Sewage systems
- Light industrial
- Dewatering/Effluent
- Commercial applications

Anywhere waste or drainage must be disposed of quickly, quietly and efficiently.

### SPECIFICATIONS

#### Pump

- Solids handling capabilities: 2" maximum.
- Capacities: up to 220 GPM.
- Total heads: up to 81 feet TDH.
- Discharge size: 2" NPT threaded companion flange as standard. 3" option available but must be ordered separately. (Order no. A1-3)
- Temperature: 104°F (40°C) continuous  
140°F (60°C) intermittent.

#### MOTORS

- Fully submerged in high grade turbine oil for lubrication and efficient heat transfer. All ratings are within the working limits of the motor.
- Class B insulation on 1/3-1 1/2 HP models.
- Class F insulation on 2 HP models.

#### Single phase (60 Hz):

- Capacitor start motors for maximum starting torque.
- Built-in overload with automatic reset.
- SJTOW or STOW severe duty oil and water resistant power cords.
- 1/3 – 1 HP models have NEMA three prong grounding plugs.
- 1 1/2 HP and larger units have bare lead cord ends.

#### Three phase (60 Hz):

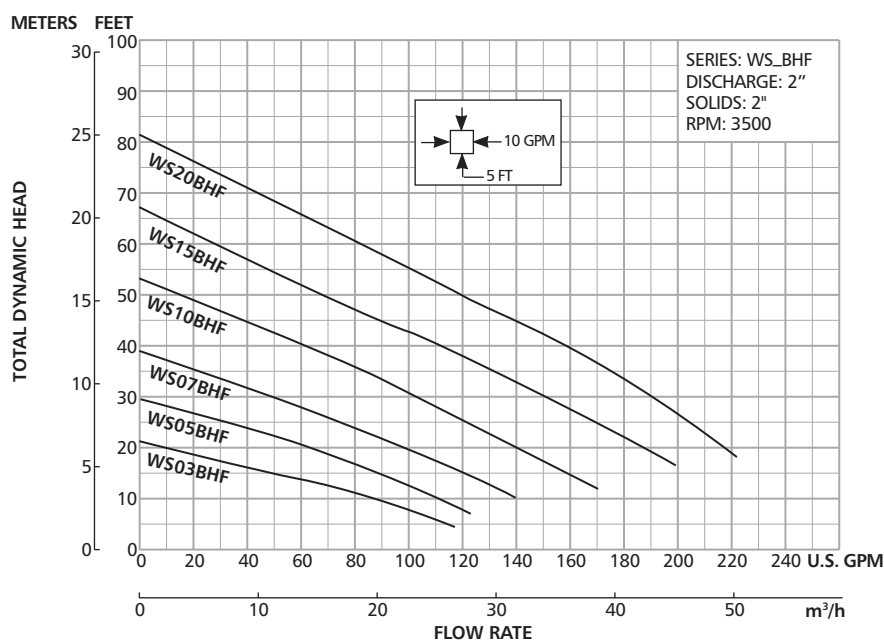
- Class 10 overload protection must be provided in separately ordered starter unit.
- STOW power cords all have bare lead cord ends.

■ **Designed for Continuous Operation:** Pump ratings are within the motor manufacturer's recommended working limits, can be operated continuously without damage when fully submerged.

■ **Bearings:** Upper and lower heavy duty ball bearing construction.

■ **Power Cable:** Severe duty rated, oil and water resistant. Epoxy seal on motor end provides secondary moisture barrier in case of outer jacket damage and to prevent oil wicking. Standard cord is 20'. Optional lengths are available.

■ **Motor Cover O-ring:** Assures positive sealing against contaminant and oil leakage.



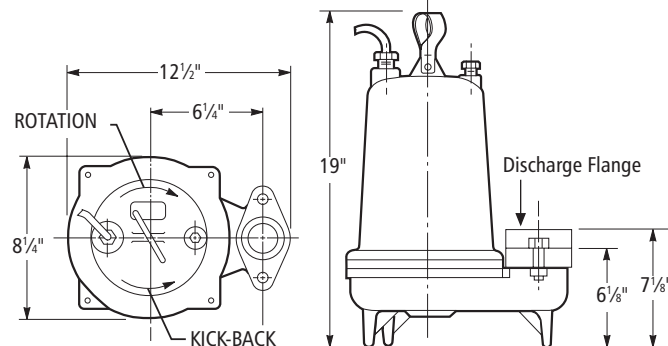
## Septic Installers' Local Distributor for Monarch Products Co. Inc. Precast Concrete Products

### MOTOR AND MODEL INFORMATION

ORDER NUMBER	HP	PHASE	VOLTS	RPM	IMPELLER DIA. (IN.)	MAX. AMPS	LOCKED ROTOR AMPS	KVA CODE	FULL LOAD MOTOR EFF. %	RESISTANCE	
										START	LINE-LINE
WS0311BHF	0.33	1	115	3500	2.94	12.4	46.0	M	54	7.5	1.0
WS0318BHF	0.33	1	208			6.8	31.0	K	68	9.7	2.4
WS0312BHF	0.33	1	230			6.2	34.5	M	53	9.6	4.0
WS0511BHF	0.5	1	115		3.19	14.5	46.0	M	54	7.5	1.0
WS0518BHF	0.5	1	208			8.4	31.0	K	68	9.7	2.4
WS0512BHF	0.5	1	230			7.6	34.5	M	53	9.6	4.0
WS0538BHF	0.5	3	200			4.9	22.6	R	68	—	3.8
WS0532BHF	0.5	3	230			3.6	18.8	R	70	—	5.8
WS0534BHF	0.5	3	460			1.8	9.4	R	70	—	23.2
WS0537BHF	0.5	3	575			1.5	7.5	R	62	—	35.3
WS0718BHF	0.75	1	208		3.44	11.0	31.0	K	68	9.7	2.4
WS0712BHF	0.75	1	230			10.0	27.5	J	65	12.2	2.7
WS0738BHF	0.75	3	200			6.2	20.6	L	64	—	5.7
WS0732BHF	0.75	3	230			5.4	15.7	K	68	—	8.6
WS0734BHF	0.75	3	460			2.7	7.9	K	68	—	34.2
WS0737BHF	0.75	3	575			2.2	9.9	L	78	—	26.5
WS1018BHF	1	1	208		3.75	14.5	59.0	K	68	9.3	1.1
WS1012BHF	1	1	230			13.0	36.2	J	69	10.3	2.1
WS1038BHF	1	3	200			8.6	27.6	M	77	—	2.7
WS1032BHF	1	3	230			7.5	24.1	L	79	—	4.1
WS1034BHF	1	3	460			3.8	12.1	L	79	—	16.2
WS1037BHF	1	3	575			3.1	9.9	L	78	—	26.5
WS1512BHF	1.5	1	230		4.00	18.0	52.0	J	67	2.76	0.53
WS1538BHF	1.5	3	200			10.0	42.4	K	78	—	1.7
WS1532BHF	1.5	3	230			9.6	42.4	K	78	—	1.7
WS1534BHF	1.5	3	460			4.8	21.2	K	78	—	6.6
WS1537BHF	1.5	3	575			3.9	16.3	L	78	—	10.5
WS2012BHF	2	1	230		4.44	18.0	49.6	F	78	3.2	1.1
WS2038BHF	2	3	200			12.0	42.4	K	78	—	1.7
WS2032BHF	2	3	230			11.6	42.4	K	78	—	1.7
WS2034BHF	2	3	460			5.8	21.2	K	78	—	6.6
WS2037BHF	2	3	575			4.7	16.3	L	78	—	10.5

### DIMENSIONS

(All dimensions are in inches. Do not use for construction purposes.)



#### Discharge Flange:

- ① 2" NPT standard
- ② 3" NPT optional (order an A1-3)



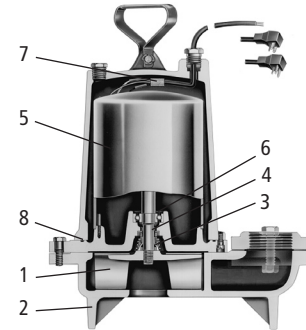
**Septic Installers' Local Distributor for Monarch Products Co. Inc.  
Precast Concrete Products**

**PERFORMANCE RATINGS** (gallons per minute)

Order No.	WS03BHF	WS05BHF	WS07BHF	WS10BHF	WS15BHF	WS20BHF
HP ▶	1/3	1/2	3/4	1	1 1/2	2
RPM ▶	3500	3500	3500	3500	3500	3500
Total Head Feet of Water	10 ▶	86	110	140	—	—
	15	48	88	120	158	—
	20	—	62	98	139	186
	25	—	32	74	120	170
	30	—	—	49	101	150
	35	—	—	21	82	130
	40	—	—	—	60	110
	45	—	—	—	38	88
	50	—	—	—	—	67
	55	—	—	—	—	47
	60	—	—	—	—	29
	65	—	—	—	—	—
	70	—	—	—	—	—
	75	—	—	—	—	—

**COMPONENTS**

Item No.	Description
1	Impeller
2	Casing
3	Mechanical Seal
4	Motor Shaft
5	Motor
6	Ball Bearings
7	Power Cable
8	Casing O-Ring



Goulds Pumps and the ITT Engineered Blocks Symbol are registered trademarks and tradenames of ITT Corporation.

SPECIFICATIONS ARE SUBJECT TO CHANGE WITHOUT NOTICE.

**B3887BHF October, 2006**

© 2006 ITT Corporation

*Engineered for life*



Septic Installers' Local Distributor for Monarch Products Co. Inc.  
Precast Concrete Products

## Goulds Pumps

WS\_B Series Model 3886

Submersible Sewage Pump

EXTENDED WARRANTY AVAILABLE FOR  
RESIDENTIAL APPLICATIONS.



### FEATURES

- **Impeller:** Cast iron, semi-open, dynamically balanced, non-clog with pump out vanes for mechanical seal protection. Optional Silicon bronze impeller available.
- **Casing:** Cast iron volute type for maximum efficiency. Designed for easy installation on A10-20 guide rail or base elbow rail systems.
- **Mechanical Seal:** SILICON CARBIDE VS. SILICON CARBIDE sealing faces for superior abrasive resistance, stainless steel metal parts, BUNA-N elastomers.
- **Shaft:** Corrosion-resistant stainless steel. Threaded design. Locknut on all models to guard against component damage on accidental reverse rotation.
- **Fasteners:** 300 series stainless steel.
- Capable of running dry without damage to components.
- Designed for continuous operation when fully submerged.



Goulds Pumps is a brand of ITT Corporation.

[www.goulds.com](http://www.goulds.com)

*Engineered for life*

### AGENCY LISTINGS



Tested to UL 778 and CSA 22.2 108 Standards  
By Canadian Standards Association  
File #LR38549

Goulds Pumps is ISO 9001 Registered.

**Septic Installers' Local Distributor for Monarch Products Co. Inc.  
Precast Concrete Products**

### **APPLICATIONS**

Specifically designed for the following uses:

- Homes
- Sewage systems
- Dewatering/Effluent
- Water transfer

### **SPECIFICATIONS**

#### **Pump:**

- Solids handling capabilities: 2" maximum.
- Discharge size: 2" NPT.
- Capacities: up to 185 GPM.
- Total heads: up to 38 feet TDH.
- Temperature: 104°F (40°C) continuous, 140°F (60°C) intermittent.

### **MOTORS**

- Fully submerged in high grade turbine oil for lubrication and efficient heat transfer. All ratings are within the working limits of the motor.

#### **■ Class B insulation.**

#### **Single phase (60 Hz):**

- All single phase models feature capacitor start motors for maximum starting torque.
- Built-in overload with automatic reset.
- SJTOW or STOW severe duty oil and water resistant power cords.
- $\frac{1}{3}$  – 1 HP models have NEMA three prong grounding plugs.

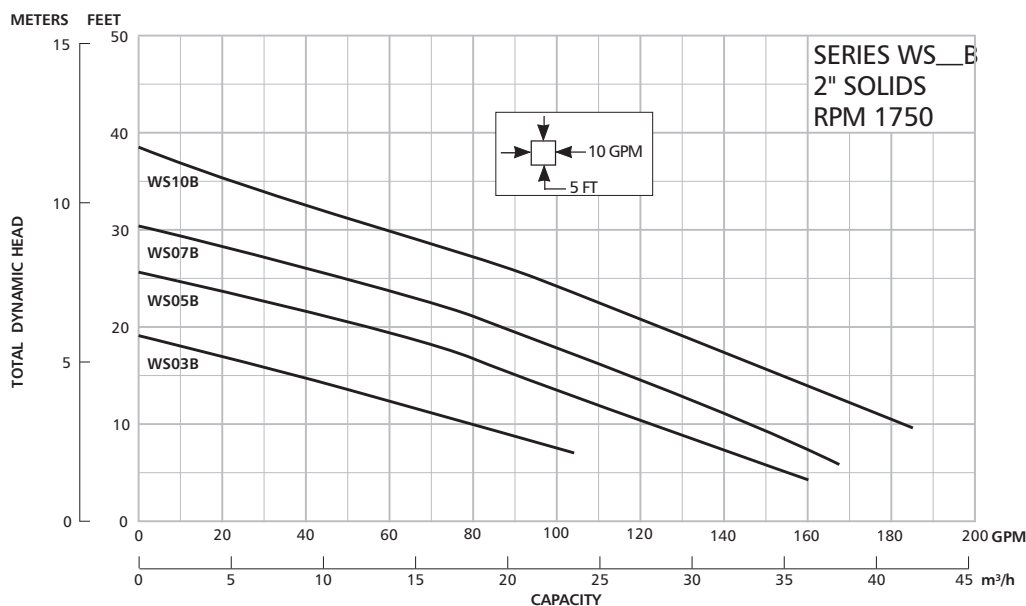
#### **Three phase (60 Hz):**

- Class 10 overload protection must be provided in separately ordered starter unit.
- STOW power cords all have bare lead cord ends.
- **Bearings:** Upper and lower heavy duty ball bearing construction.
- **Designed for Continuous Operation:** Pump ratings are within the motor manufacturer's recommended working limits, can be operated continuously without damage when fully submerged.
- **Power Cable:** Severe duty rated, oil and water resistant. Epoxy seal on motor end provides secondary moisture barrier in case of outer jacket damage and to prevent oil wicking. Standard cord is 20'. Optional lengths are available.
- **Motor Cover O-ring:** Assures positive sealing against contaminants and oil leakage.

**Septic Installers' Local Distributor for Monarch Products Co. Inc.  
Precast Concrete Products**

## MODELS

ORDER NUMBER	HP	PHASE	VOLTS	RPM	IMPELLER DIA. (in.)	MAX. AMPS	LRA	KVA CODE	FULL LOAD MOTOR EFF.	RESISTANCE		WT. (LBS.)
										START	LINE-LINE	
WS0311B	0.33	1	115	1750	4.69	10.7	30.0	M	54	11.9	1.7	63
WS0318B			208			6.8	19.5	K	51	9.1	4.2	
WS0312B			230			4.9	14.1	L	53	14.5	8.0	
WS0511B	0.5	1	115		5.00	14.5	31.1	J	55	9.3	1.4	65
WS0518B			208			8.0	19.5	K	51	9.1	4.2	
WS0512B			230			7.3	16.5	J	54	11.7	5.6	
WS0538B		3	200			3.8	12.3	K	75	NA	6.7	
WS0532B			230			3.3	9.7	K	75	NA	9.9	
WS0534B			460			1.7	4.9	K	75	NA	39.4	
WS0537B			575			1.4	4.3	K	68	NA	47.8	
WS0718B	0.75	1	208		5.38	11.0	39.0	K	65	2.6	1.4	85
WS0712B			230			9.4	24.8	J	57	4.8	2.3	
WS0738B		3	200			4.1	21.2	H	74	NA	4.3	
WS0732B			230			3.6	17.3	J	76	NA	5.6	
WS0734B			460			1.8	8.9	J	76	NA	22.4	
WS0737B			575			1.5	7.3	J	71	NA	29.2	
WS1018B			208			14.0	39.0	K	65	2.6	1.4	
WS1012B	1	1	230		5.75	12.3	30.5	H	60	4.3	1.8	
WS1038B			200			6.0	21.2	H	74	NA	4.3	
WS1032B		3	230			5.8	17.3	J	76	NA	5.6	
WS1034B			460			2.9	8.9	J	76	NA	22.4	
WS1037B			575			2.4	7.3	J	71	NA	29.2	



## Septic Installers' Local Distributor for Monarch Products Co. Inc. Precast Concrete Products

### PERFORMANCE RATINGS (gallons per minute)

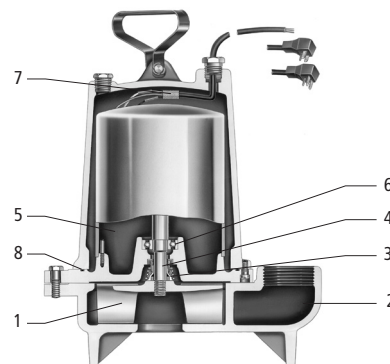
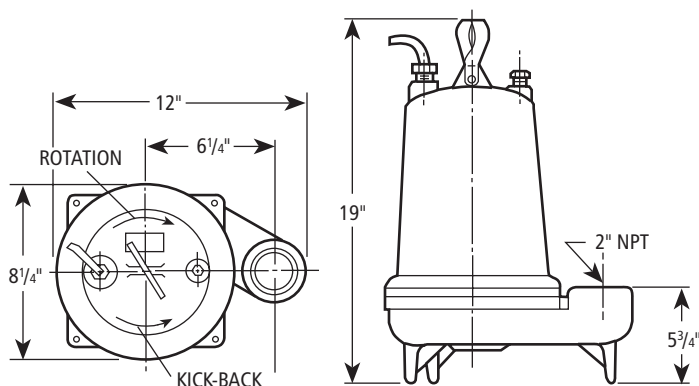
Order No.	WS03B	WS05B	WS07B	WS10B
HP ▶	1/3	1/2	3/4	1
RPM ▶	1750	1750	1750	1750
Total Head Feet of Water	10 ▶	80	122	145
	15	36	90	116
	20	—	50	86
	25	—	—	48
	30	—	—	—
	35	—	—	—

### COMPONENTS (for reference only)

Item No.	Description
1	Impeller
2	Casing
3	Mechanical Seal
4	Motor Shaft
5	Motor
6	Ball Bearings
7	Power Cable
8	Casing O-Ring

### DIMENSIONS

(All dimensions are in inches. Do not use for construction purposes.)



**NOTE:** For specific parts break-down, see repair parts.



Goulds Pumps and the ITT Engineered Blocks Symbol are registered trademarks and tradenames of ITT Corporation.

SPECIFICATIONS ARE SUBJECT TO CHANGE WITHOUT NOTICE.

**B3886 June, 2009**

© 2007 ITT Corporation

*Engineered for life*

Septic Installers' Local Distributor for Monarch Products Co. Inc.  
Precast Concrete Products

## Goulds Pumps

WE Series Model 3885

Submersible Effluent Pump

EXTENDED WARRANTY AVAILABLE FOR  
RESIDENTIAL APPLICATIONS.



### FEATURES

- **Impeller:** Cast iron, semi-open, non-clog with pump-out vanes for mechanical seal protection. Balanced for smooth operation. Silicon bronze impeller available as an option.
- **Casing:** Cast iron volute type for maximum efficiency. 2" NPT discharge.
- **Mechanical Seal:** Silicon Carbide vs. Silicon Carbide sealing faces. Stainless steel metal parts, BUNA-N elastomers.
- **Shaft:** Corrosion-resistant, stainless steel. Threaded design. Locknut on all models to guard against component damage on accidental reverse rotation.
- **Fasteners:** 300 series stainless steel.
- Capable of running dry without damage to components.
- Designed for continuous operation when fully submerged.



Goulds Pumps is a brand of ITT Corporation.

[www.goulds.com](http://www.goulds.com)

*Engineered for life*

## Septic Installers' Local Distributor for Monarch Products Co. Inc. Precast Concrete Products

### APPLICATIONS

Specifically designed for the following uses:

- Homes, Farms, Trailer Courts, Motels, Schools, Hospitals, Industry, Effluent Systems

### SPECIFICATIONS

#### Pump

- Solids handling capabilities:  $\frac{3}{4}$ " maximum.
- Discharge size: 2" NPT.
- Capacities: up to 140 GPM.
- Total heads: up to 128 feet TDH.
- Temperature:  
104°F (40°C) continuous, 140°F (60°C) intermittent.
- See order numbers on reverse side for specific HP, voltage, phase and RPM's available.

### MOTORS

- Fully submerged in high-grade turbine oil for lubrication and efficient heat transfer.
- Class B insulation on  $\frac{1}{3}$  – 1½ HP models.
- Class F insulation on 2 HP models.

#### Single phase (60 Hz):

- Capacitor start motors for maximum starting torque.
- Built-in overload with automatic reset.
- SJTOW or STOW severe duty oil and water resistant power cords.

- $\frac{1}{3}$  – 1 HP models have NEMA three prong grounding plugs.
- 1½ HP and larger units have bare lead cord ends.

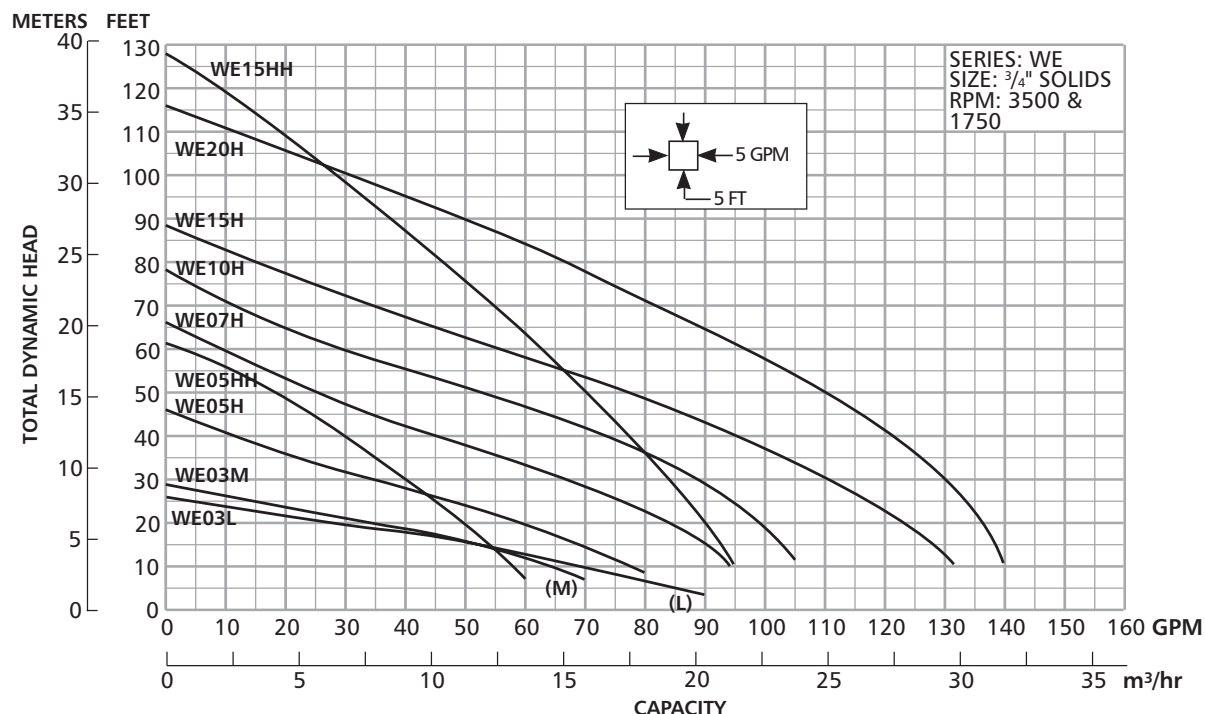
#### Three phase (60 Hz):

- Class 10 overload protection must be provided in separately ordered starter unit.
- STOW power cords all have bare lead cord ends.
- **Designed for Continuous Operation:** Pump ratings are within the motor manufacturer's recommended working limits, can be operated continuously without damage when fully submerged.
- **Bearings:** Upper and lower heavy duty ball bearing construction.
- **Power Cable:** Severe duty rated, oil and water resistant. Epoxy seal on motor end provides secondary moisture barrier in case of outer jacket damage and to prevent oil wicking. Standard cord is 20'. Optional lengths are available.
- **O-ring:** Assures positive sealing against contaminants and oil leakage.

### AGENCY LISTINGS



Tested to UL 778 and CSA 22.2 108 Standards  
By Canadian Standards Association File #LR38549  
Goulds Pumps is ISO 9001 Registered.



## Septic Installers' Local Distributor for Monarch Products Co. Inc. Precast Concrete Products

### MODELS

Order Number	HP	Phase	Volts	RPM	Impeller Diameter (in.)	Maximum Amps	Locked Rotor Amps	KVA Code	Full Load Efficiency %	Resistance		Power Cable Size	Weight (lbs.)
										Start	Line-Line		
WE0311L	0.33	1	115	1750	5.38	10.7	30.0	M	54	11.9	1.7	16/3	56
WE0318L			208			6.8	19.5	K	51	9.1	4.2		
WE0312L			230			4.9	14.1	L	53	14.5	8.0		
WE0311M			115			10.7	30.0	M	54	11.9	1.7		
WE0318M			208			6.8	19.5	K	51	9.1	4.2		
WE0312M			230			4.9	14.1	L	53	14.5	8.0		
WE0511H	0.5	1	115	3450	3.56	14.5	46.0	M	54	7.5	1.0	14/3	60
WE0518H			208			8.1	31.0	K	68	9.7	2.4	16/3	60
WE0512H			230			7.3	34.5	M	53	9.6	4.0	14/4	60
WE0538H		3	200			4.9	22.6	R	68	NA	3.8		
WE0532H			230			3.3	18.8	R	70	NA	5.8		
WE0534H			460			1.7	9.4	R	70	NA	23.2		
WE0537H			575			1.4	7.5	R	62	NA	35.3		
WE0511HH		1	115		3.88	14.5	46.0	M	54	7.5	1.0	14/3	60
WE0518HH			208			8.1	31.0	K	68	9.7	2.4	16/3	60
WE0512HH			230			7.3	34.5	M	53	9.6	4.0	14/4	60
WE0538HH		3	200			4.9	22.6	R	68	NA	3.8		
WE0532HH			230			3.6	18.8	R	70	NA	5.8		
WE0534HH			460			1.8	9.4	R	70	NA	23.2		
WE0537HH			575			1.5	7.5	R	62	NA	35.3		
WE0718H	0.75	1	208	3450	4.06	11.0	31.0	K	68	9.7	2.4	14/3	70
WE0712H			230			10.0	27.5	J	65	12.2	2.7	14/4	70
WE0738H		3	200			6.2	20.6	L	64	NA	5.7		
WE0732H			230			5.4	15.7	K	68	NA	8.6		
WE0734H			460			2.7	7.9	K	68	NA	34.2		
WE0737H			575			2.2	9.9	L	78	NA	26.5		
WE1018H	1	1	208		4.44	14.0	59.0	K	68	9.3	1.1	14/3	70
WE1012H			230			12.5	36.2	J	69	10.3	2.1	14/4	70
WE1038H		3	200			8.1	37.6	M	77	NA	2.7		
WE1032H			230			7.0	24.1	L	79	NA	4.1		
WE1034H			460			3.5	12.1	L	79	NA	16.2		
WE1037H			575			2.8	9.9	L	78	NA	26.5		
WE1518H	1.5	1	208	3450	4.56	17.5	59.0	K	68	9.3	1.1	14/3	80
WE1512H			230			15.7	50.0	H	68	11.3	1.6	14/4	80
WE1538H		3	200			10.6	40.6	K	79	NA	1.9		
WE1532H			230			9.2	31.7	K	78	NA	2.9		
WE1534H			460			4.6	15.9	K	78	NA	11.4		
WE1537H			575			3.7	13.1	K	75	NA	16.9		
WE1518HH		1	208		5.50	17.5	59.0	K	68	9.3	1.1	14/3	80
WE1512HH			230			15.7	50.0	H	68	11.3	1.6	14/4	80
WE1538HH		3	200			10.6	40.6	K	79	NA	1.9		
WE1532HH			230			9.2	31.7	K	78	NA	2.9		
WE1534HH			460			4.6	15.9	K	78	NA	11.4		
WE1537HH			575			3.7	13.1	K	75	NA	16.9		
WE2012H	2	3	230	3450	5.38	18.0	49.6	F	78	3.2	1.2	14/3	83
WE2038H			200			12.0	42.4	K	78	NA	1.7	14/4	83
WE2032H			230			11.6	42.4	K	78	NA	1.7		
WE2034H			460			5.8	21.2	K	78	NA	6.6		
WE2037H			575			4.7	16.3	L	78	NA	10.5		



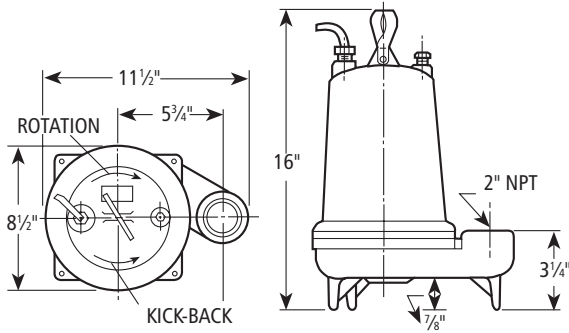
## Septic Installers' Local Distributor for Monarch Products Co. Inc. Precast Concrete Products

### PERFORMANCE RATINGS (gallons per minute)

Order No.	WE03L	WE03M	WE05H	WE07H	WE10H	WE15H	WE05HH	WE15HH	WE20H
HP	1/3	1/3	1/2	3/4	1	1 1/2	1/2	1 1/2	2
RPM	1750	1750	3500	3500	3500	3500	3500	3500	3500
5	86	—	—	—	—	—	—	—	—
10	70	63	78	94	—	—	58	95	—
15	52	52	70	90	103	128	53	93	138
20	27	35	60	83	98	123	49	90	136
25	5	15	48	76	94	117	45	87	133
30	—	—	35	67	88	110	40	83	130
35	—	—	22	57	82	103	35	80	126
40	—	—	—	45	74	95	30	77	121
45	—	—	—	35	64	86	25	74	116
50	—	—	—	25	53	77	—	70	110
55	—	—	—	—	40	67	—	66	103
60	—	—	—	—	30	56	—	63	96
65	—	—	—	—	20	45	—	58	89
70	—	—	—	—	—	35	—	55	81
75	—	—	—	—	—	25	—	51	74
80	—	—	—	—	—	—	—	47	66
90	—	—	—	—	—	—	—	37	49
100	—	—	—	—	—	—	—	28	30

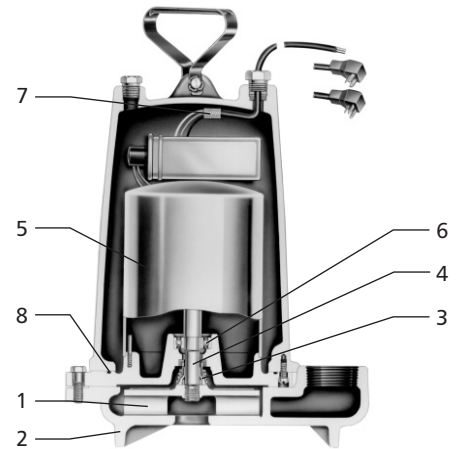
### DIMENSIONS

(All dimensions are in inches. Do not use for construction purposes.)



### COMPONENTS

Item No.	Description
1	Impeller
2	Casing
3	Mechanical Seal
4	Motor Shaft
5	Motor
6	Ball Bearings
7	Power Cable
8	Casing O-Ring



Goulds Pumps and the ITT Engineered Blocks Symbol are registered trademarks and tradenames of ITT Corporation.

SPECIFICATIONS ARE SUBJECT TO CHANGE WITHOUT NOTICE.

B3885 June, 2009

© 2008 ITT Corporation

*Engineered for life*



Septic Installers' Local Distributor for Monarch Products Co. Inc.  
Precast Concrete Products

## Goulds Pumps

EP04 & EP05 Series Model 3871

Submersible Effluent Pumps



### FEATURES

- **EP04 Impeller:** Thermoplastic semi-open design with pump out vanes for mechanical seal protection.
- **EP05 Impeller:** Thermoplastic enclosed design for improved performance.
- **Casing and Base:** Rugged thermoplastic design provides superior strength and corrosion resistance.
- **Motor Housing:** Cast iron for efficient heat transfer, strength, and durability.
- **Motor Cover:** Thermoplastic cover with integral handle and float switch attachment points.
- **Power Cable:** Severe duty rated oil and water resistant.
- **Bearings:** Upper and lower heavy duty ball bearing construction.



Goulds Pumps is a brand of ITT  
Residential and Commercial Water.

[www.goulds.com](http://www.goulds.com)

*Engineered for life*

## Septic Installers' Local Distributor for Monarch Products Co. Inc. Precast Concrete Products

### APPLICATIONS

Specifically designed for the following uses:

- Effluent systems
- Homes
- Farms
- Heavy duty sump
- Water transfer
- Dewatering

### SPECIFICATIONS

- Solids handling capability:  $\frac{3}{4}$ " maximum.
- Capacities: up to 60 GPM.
- Total heads: up to 31 feet.
- Discharge size:  $1\frac{1}{2}$ " NPT.
- Mechanical seal: carbon-rotary/ceramic-stationary, BUNA-N elastomers.
- Temperature:  
104° F (40° C) continuous  
140° F (60° C) intermittent.
- Fasteners: 300 series stainless steel.
- Capable of running dry without damage to components.

### Motor:

- EP04 Single phase: 0.4 HP, 115 or 230 V, 60 Hz, 1550 RPM, built in overload with automatic reset.
- EP05 Single phase: 0.5 HP, 115 V or 230V, 60 Hz, 1550 RPM, built in overload with automatic reset.
- Power cord: 10 foot standard length, 16/3 SJTW with three prong grounding plug. Optional 20 foot length, 16/3 SJTW with three prong grounding plug (standard on EP05).
- Fully submerged in high grade turbine oil for lubrication and efficient heat transfer.

Available for automatic and manual operation.  
Automatic models include Mechanical Float Switch  
assembled and preset at the factory.

### AGENCY LISTING



Tested to UL 778 and  
CSA 22.2 108 Standards  
By Canadian Standards Association  
File #LR38549

Goulds Pumps is ISO 9001 Registered.

### MODEL INFORMATION

Order No.	HP	Volts	Amps	Minimum Circuit Breaker	Phase	Float Switch Style	Cord Length	Discharge Connection	Minimum On Level	Minimum Off Level	Minimum Basin Diameter	Maximum Solids Size	Shipping Weight lbs/kg
EP0411	.4	115	12	20	1	Plug / No Switch	10'	1½"	Manual	Manual	15"	¾"	20 / 9.1
EP0411A						Piggyback / Wide-Angle	10'	1½"	12"	6"	15"		21 / 9.5
EP0411F						Plug / No Switch	20'	1½"	Manual	Manual	15"		20 / 9.1
EP0411AC						Piggyback / Wide-Angle	20'	1½"	12"	6"	15"		21 / 9.5
EP0412		230	6	10		Plug / No Switch	10'	1½"	Manual	Manual	15"		20 / 9.1
EP0412F						Plug / No Switch	20'	1½"	Manual	Manual	15"		20 / 9.1
EP0511F	.5	115	13	20		Plug / No Switch	20'	1½"	Manual	Manual	15"		22 / 10
EP0511AC						Piggyback / Wide-Angle	20'	1½"	12"	6"	15"		23 / 10.4
EP0512F		230	6.5	10		Plug / No Switch	20'	1½"	Manual	Manual	15"		22 / 10



# CHESAPEAKE BAY SEPTIC TANK, LLC

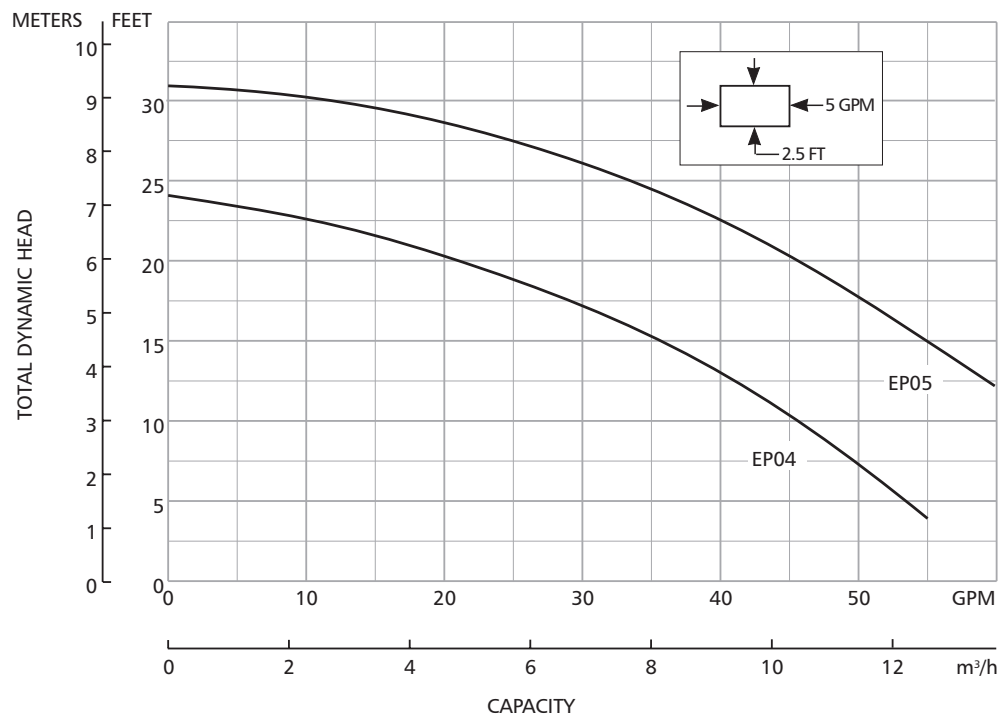
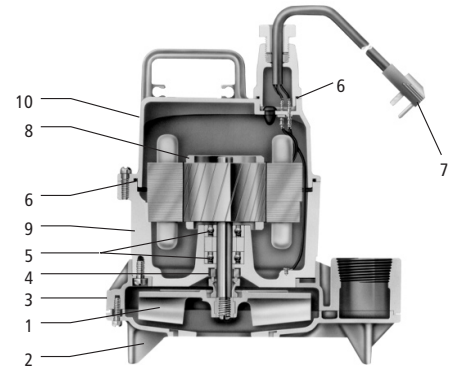
**Septic Installers' Local Distributor for Monarch Products Co. Inc.  
Precast Concrete Products**

## PERFORMANCE RATINGS

Total Head (ft. of water)	Gallons Per Minute	
	EP04	EP05
5	53	—
10	46	62
15	36	55
20	21	46
25	0	33
30	—	11

## COMPONENTS

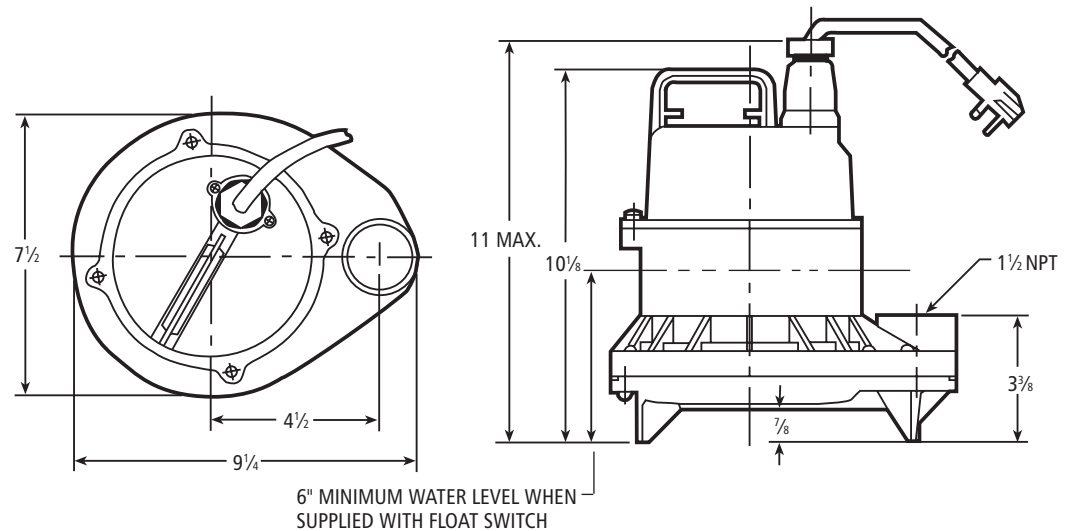
Item No.	Description
1	Impeller
2	Base
3	Pump Casing
4	Mechanical Seal
5	Ball Bearings
6	O-Rings
7	Power Cord
8	Oil Filled Motor
9	Motor Housing/ Stator Assembly
10	Motor Cover



**Septic Installers' Local Distributor for Monarch Products Co. Inc.  
Precast Concrete Products**

## **DIMENSIONS**

(All dimensions are in inches. Do not use for construction purposes.)



Goulds Pumps and the ITT Engineered Blocks Symbol are registered trademarks and tradenames of ITT Corporation.

SPECIFICATIONS ARE SUBJECT TO CHANGE WITHOUT NOTICE.

**B3871 July, 2006**

© 2006 ITT Corporation

*Engineered for life*